

# Multigrow

## Preparation Guide



The Multigrow Greenhouse incorporates a unique base system, allowing it to be installed on almost any level site. The base frame is designed specifically to accept 400 x 400mm paving slabs which, when positioned within the base frame will act as the internal floor along with adding weight and stability to the greenhouse.

A level site is defined as a site with no more than a 50mm fall for every 3m (2" fall for every 10ft)

### Growing into the ground

For growing directly into the ground, a level garden area consisting of grass or topsoil will be the most suitable surface for this purpose.

The Adman installation team will sit the base frame directly on the ground. Once the base frame is in position the installation team will then proceed with the greenhouse fitting.

Unlevel garden areas are still manageable but please allow plenty of extra paving slabs for the installation team to level and support the base frame. If your garden area is very unlevel, please consider carrying out groundworks to level the site.

#### Please note:

Less paving slabs will be required when planters are being used. For example, the 2.44m x 2.65m Multigrow requires 30no. paving slabs to complete the internal floor. If you decide to position 4 large planters within your greenhouse (each large planter will replace 2 paving slabs), you will now only need 22no. Paving slabs to complete the inside floor.



### Growing in pots and Containers

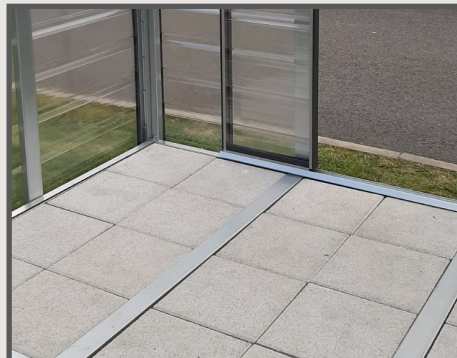
The Multigrow greenhouse is ideal for users planning to grow solely in pots and containers. In this instance the greenhouse can be installed on almost any level surface such as hardcore, concrete, tarmac, paved areas and grass.

The Adman installation team will sit the base frame directly on the ground. Once the base frame is in position the installation team will then proceed with the greenhouse fitting.

Unlevel surfaces are still manageable but please allow plenty of extra paving slabs for the installation team to level and support the base frame. If your surface is very unlevel, please consider carrying out groundworks to level the site.

#### Please note:

To complete the internal floor all paving slabs as specified within the Multigrow pricelist will be required.



**Important Please Note:** Paving slabs are not included and must be provided by the customer. Please ensure that the slabs supplied measure 400 x 400 x 40mm.

Paving slabs add weight and stability to the greenhouse. Failure by the customer to install these slabs in the greenhouse base frame may result in the greenhouse moving in windy conditions.